

## On some *Piesma* from Korea (Heteroptera)

By Ernst HEISS and Chang Eon LEE

The distribution of the genus *Piesma* in the Far East is still insufficiently known, in particular on the Korean Peninsula. LEE & PARK (1971) and PARK & LEE (1975) made morphological and ecological studies on *Piesma maculatum* LAP. and an unknown second species (sp. B). LEE (1971) reported the occurrence of *P. maculatum* and LEE (1979) again *P. sp.*, all from South Korea. In 1977 PÉRICART described *Piesma josifovi* on specimens from Rjongaksan near Pjöngjang.

Now the material collected in South Korea by one of the authors (C.E.L.) could be revised and the unknown species be identified as *Piesma josifovi* PÉRICART. It contained also the unknown macropterous form of *P. josifovi* and an additional third species, *P. capitatum* WOLFF.

### Genus *Piesma* LE PELETIER & SERVILLE, 1828

#### *Piesma* (s. str.) *capitatum* (WOLFF, 1804)

HEISS & PÉRICART 1975: 520 (synonymies, lectotypes).

1♂ Taegu, Front Mt., 2 X 61; 1♂ Palgongsan near Taegu, 16 IX 60; 1♂ 1♀ Song-gae, Weolacksan, 8 VIII 78. All specimens are brachypterous.

New record. This species lives on Chenopodiaceae and is reported from Mongolia, China and Japan.

#### *Piesma* (s. str.) *maculatum* (LAPORTE DE CASTELNAU, 1833)

LEE & PARK 1971; LEE 1971: 285-286; HEISS & PÉRICART 1975: 521 (synonymies, lectotypes); PARK & LEE 1975.

2♂ 3♀ Kyungsan, 10 IX 60; 4♂ 2♀ Shincheondong near Taegu, 16 VIII 61 and 3 ex. 10 X 62; 1♀ Taegu, 30 V 67. All specimens are macropterous.

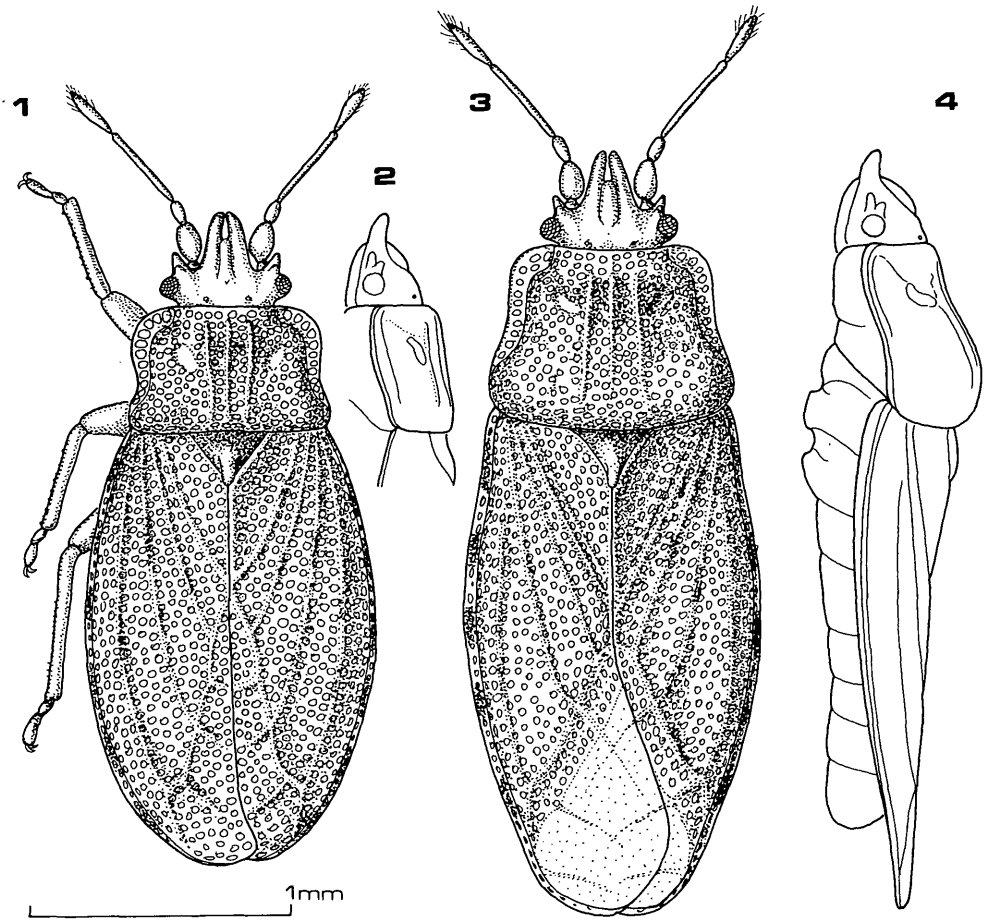
*P. maculatum* was found on *Chenopodium acuminatum* WILLD. only. From the Far East it is further recorded from China, Manchuria and Japan.

#### *Piesma* (*Parapiesma*) *josifovi* PÉRICART, 1977

Figs. 1-4

PÉRICART 1977: 33; LEE & PARK 1971: 11 (*Piesma* sp. B.); PARK & LEE 1975: 15 (*Piesma* sp. B.); LEE 1979: 147 (*Piesma* sp.); HSIAO & JING 1979: 459; HSIAO et al. 1981: 220.

1♂ 3♀ brach. Kosan near Taegu, 2 X 58; 3♂ 1♀ brach. 1♀ macr. Taegu, 13 IX 60; 7♂ 1♀ brach. 1♀ macr. Taegu, 14 IX 60; 1♂ macr. Taegu, 15 VIII 61; 7♂ 5♀ brach. Shincheondong near Taegu, 16 VIII 61.



Figs. 1-4. *Piesma josifovi* PÉR. 1: brachypterous male, dorsal view; 2: lateral view; 3: macropterous male, dorsal view; 4: lateral view.

The host plants of *P. josifovi* are also Chenopodiaceae: *Chenopodium acuminatum* WILLD. and *Ch. album* L. Beside the typical series it is also reported from China, Mongolia and Russian Far East.

The macropterous form is recorded for the first time. It is considerably larger in size; the pronotum longer, 1.27 (♀) to 1.38 (♂) times as wide as its median length, in profile elevated posteriorly, lateral margins less sinuate at middle, hemelytra with fully developed membrane, surpassing distinctly the apex of abdomen, 1.52 (♀) to 1.60 (♂) times as long as its maximum width.

Length: male 2.90 mm; females 3.20 mm. Width across hemelytra 1.20 mm (male); 1.37 mm (female).

It is to be expected that further investigations will confirm the occurrence of other species in Korea which are recorded from China as: *Piesma kochiae* ssp. *longicarinum* HSIAO & JING, *P. biceps* HSIAO & JING, *P. xishaena* HSIAO & JING or the widely distributed *P. quadratum* (FIEBER) or *P. salsolae* (BECKER).

## Abstract

The revision of *Piesma*, collected by one of the authors (C.E.L.) in South Korea confirmed the occurrence of *Piesma josifovi* PÉR. as well as of *P. capitatum* WOLFF. For these species and for *P. maculatum* LAP. distributional data are given. The unknown macropterous form of *P. josifovi* is figured.

## Zusammenfassung

Die Überprüfung eines *Piesma*-Materials aus Südkorea hat das Vorkommen von *P. josifovi* PÉR. und *P. capitatum* W. bestätigt. Für diese beiden Arten und für *P. maculatum* LAP. werden die Funddaten angeführt. Die bisher unbekannte makroptere Form von *P. josifovi* wird abgebildet.

## REFERENCES

- HEISS, E. & PÉRICART, J., 1975. – Introduction à une révision des *Piesma* paléarctiques. Étude du matériel-type; établissement de diverses synonymies et de nouveaux regroupements (Hemiptera Piesmatidae). Ann. Soc. ent. France (N. S.) 11 (3): 517-540, 4 fig.
- HSIAO, T. Y. & JING, S., 1979. – A preliminary study of Piesmatidae of China (Hemiptera-Heteroptera). Acta Ent. Sin. XXII (4): 453-459.
- HSIAO, T. Y. et al., 1981. – A Handbook for the determination of the Chinese Hemiptera-Heteroptera, Vol. II: 216-221, figs. 662-685, photos 274-281 (Piesmatidae). Tianjin.
- LEE, C. E., 1971. – Heteroptera of Korea. III. Ency. Fauna & Flora of Korea XII (Insecta IV): 285-286, fig. 84 (*P. maculatum*).
- LEE, C. E., 1979. – Hemipterous Insects of Mt. Wolak and Choryeong Barries. The Report of KACN, XV: 147 (*Piesma* sp.).
- LEE, C. E. & PARK, S. O., 1971. – Morphological studies on the eggs and larvae of two species of Piesmatidae (Hemiptera). Nature & Life III: 1-23.
- PARK, S. O. & LEE, C. E., 1975. – Ecological studies on two *Piesma* species in Korea (Hemiptera, Piesmatidae). Nature & Life V: 15-32.
- PÉRICART, J., 1977. – Un Hémiptère Piesmatidae nouveau de Corée et un Hémiptère Berytinidae nouveau d'Afrique du Nord. Bull. Soc. Ent. Fr. 82: 33-38 (*Piesma josifovi*).

Addresses of the authors: Dipl. Ing. E. HEISS,  
Josef Schraffl-Str. 2 a,  
A - 6020 Innsbruck, Austria.

Dr. Chang Eon LEE,  
Dept. of Biology, Kyungpook National University,  
Taegu 635, Korea.

# ZOBODAT - [www.zobodat.at](http://www.zobodat.at)

Zoologisch-Botanische Datenbank/Zoological-Botanical Database

Digitale Literatur/Digital Literature

Zeitschrift/Journal: [Zeitschrift der Arbeitsgemeinschaft Österreichischer Entomologen](#)

Jahr/Year: 1983

Band/Volume: [35](#)

Autor(en)/Author(s): Heiss Ernst, Lee Chang Eon

Artikel/Article: [On some Piesma from Korea \(Heteroptera\). 52-54](#)