

## Two new species of the Genus *Nebria* LATR. in China (Coleoptera)

By V. G. SHILENKOV (Irkutsk) and A. J. DOSTAL (Wien)

During the examination of the Nebriini of the Collection Suenson in the 'Zoologisk Museum København' I found two species which I was not able to identify clearly. After talk over with my colleague Mr. Dr. V. G. Shilenkov we decided to describe the two unknown forms.

Further results of my study about the material of Mr. Suenson's collection (Nebriini-Broschini) I will probably publish in this paper another time.

We thank Mr. Ole Martin (Zoologisk Museum København) very much for presenting us the paratype material.

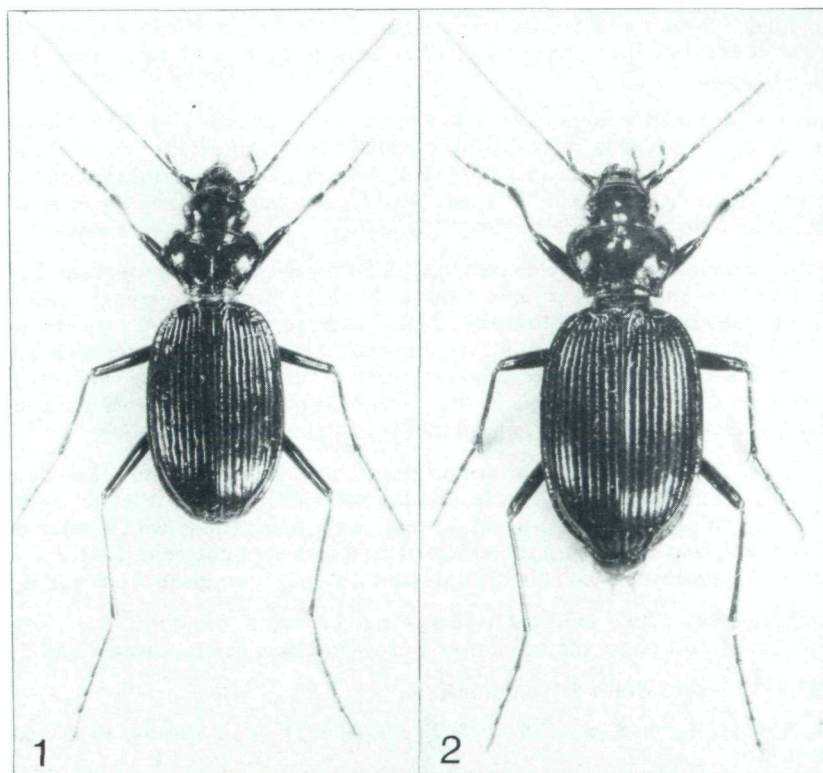


Fig. 1: *Nebria suenisoni* n.sp. Holotype ♂, 12,3 mm. – Fig. 2: *Nebria wutaishanensis* n.sp. Paratypus ♀, 11,4 mm.

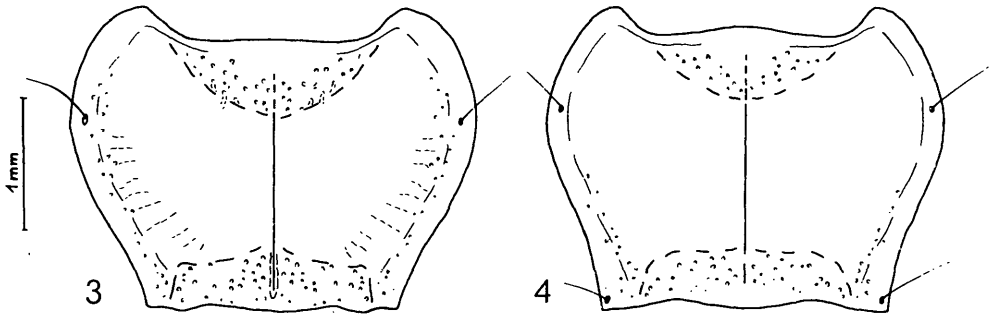


Fig. 3: Pronotum of *N. suensoni* n.sp. – Fig. 4: Pronotum of *N. wutaishanensis* n.sp.

*Nebria (Reductonebria) suensoni* n.sp.

Fig. 1.

Body dark piceous, head with two red frontal spots, appendages piceous, femorae and first antennal segment infuscated, elytra with distinct violet lustre.

Head slightly constricted behind strongly prominent eyes, frontal furrows flat and smooth, antennae long and slender, extending in male the middle of elytra, in female slightly shorter, segment 1 with 1 seta from above, segment 2 with 1 seta from below, segment 3 with 5-6 setae apically. Penultimate segment of labial palpi with 3 setae, submentum with row of 10-12 setae.

Pronotum (fig. 3) rather convex, 1.31-1.42 times as wide as head, 1.44-1.59 times as wide as long, strongly rounded at sides, hardly sinuated (or not sinuated) before obtuse hind angles, apical angles widely rounded. Median line and transverse impressions distinct, lateral sides widely flattened and reflexed, basal foveae narrow and deep, basal area and lateral reflexions sparsely punctate. Only 1 lateral seta, postangular seta absent.

Elytra elongate ovate, moderately convex, 1.38-1.50 times as wide as pronotum, 1.60-1.86 times as long as wide, widest in apical third, shoulders hardly prominent, basal border forming with lateral one very obtuse angle or arch, apical angles of elytra widely rounded. Striae rather deep and distinctly punctate, intervals weakly convex, interval 3 with 3-5, interval 7 with 4-5 setiferous pores, adjoining striae 3 and 6 respectively, interval 5 sometimes with 1 pore apically. Intervals in the places of situation of setiferous pores strongly constricted; scutellar pores absent, apical carina strong.

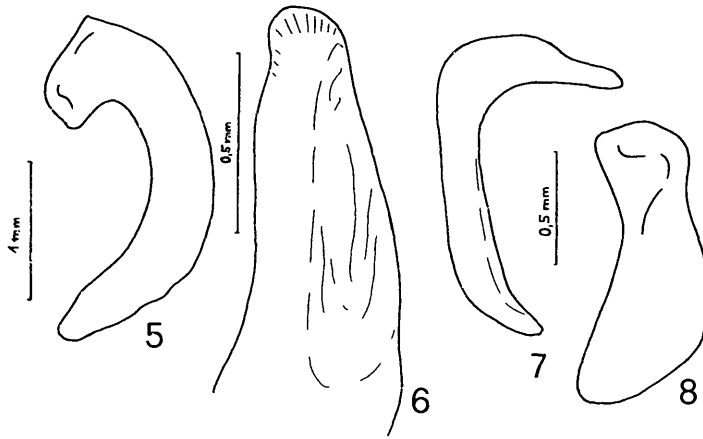
Lateral sides of mesosternum, metasternum and sternit 1 with sparse and faint punctures, metaepisterna 1.6 times as long as wide. Hind coxae multisetose (2-4 setae), sternits 3-5 with 2-3 setae on each side, anal sternit in male with 2, in female with 4 setae on hind margin. Legs long and slender, upper surface of tarsi sparsely pubescent, fore tarsi of male with 3 dilated segments, segment 4 of hind tarsi distinctly produced from below.

Microsculpture very faint, on head isodiametric, on pronotum consists of very short transverse meshes, on elytra meshes longer and wider. Male genital organs: Figs. 5-8.

Length 11.9-13.1 mm. Width 4.1-5.0 mm.

Holotype, ♂: China, Wu Tai Shan, 39°N 113° 30'E, 30. VIII. 1929, leg.: E. Suenson. In coll. Zool. Mus. København.

Paratypes: 36 ♂♂, 38 ♀♀ with the same label; 2 ♀♀ 31. VIII. 1929, same locality and collector. Most of the paratypes in coll. Zool. Mus. København, others in coll. Dostal (Wien), Kirschenhofer (Wien) and Dr. Shilenkov (Irkutsk).



Figs. 5-8: Male genital organ of *N. suenioni* n.sp. — 5) aedeagus, left lateral view; 6) apex of aedeagus, right lateral view; 7) right paramere; 8) left paramere.

The new species belongs to subgenus *Reductonebria* SHILENKOV, 1975. From all representatives of this subgenus it good differs by violet lustre of elytra, reduction of postangular seta of pronotum, hardly pubescent tarsi, structure of genital organs.

*Nebria (Boreonebria) wutaishanensis* n.sp.

Fig. 2.

Body and appendages dark piceous, antennal segments 1-4 and femorae blackish.

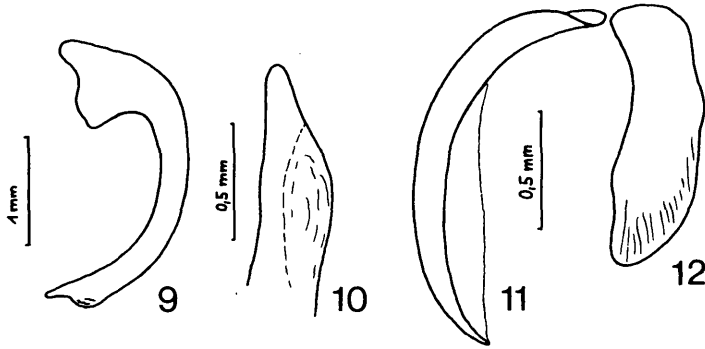
Head with moderately prominent eyes, frontal furrows very small and smooth, antennae slender, extending in female to basal third of elytra, its segment 1 with 2 setae from above, segment 2 with 1 seta from below, segment 3 with 6 setae apically. Penultimate segment of labial palpi with 3 setae, submentum with 4 setae.

Pronotum (fig. 4) moderately convex, 1.42-1.43 times as wide as head, 1.47-1.50 times as wide as long, hardly sinuated before rectangular hind angles, apical angles short and rounded. Lateral sides rather strong widened and reflexed, transverse impressions and median line distinct, basal foveae deep and narrow, basal area and lateral reflexions with sparse and faint punctures. Only 1 lateral seta, postangular seta present.

Elytra elongate ovate, moderately convex, slightly flattened on disk, with rounded shoulders, 1.44-1.45 times as wide as pronotum, 1.57-1.58 times as long as wide, widest in apical third; basal border curved, forming with lateral one very obtuse angle, striae deep and distinctly punctate in basal half, intervals convex, interval 3 with 2-3, interval 7 with 2-4 small-setiferous pores, scutellar pores present, apical carina strong.

Lateral sides of mesosternum, metasternum and sternit 1 sparsely and faintly punctate, metaepisterna 1.4 times as long as wide. Hind coxae and sternits 3-5 unisetose, anal sternit in male with 2, in female with 4 setae on hind margin.

Legs long and slender, fore tarsi of male with 3 dilated segments, segment 4 of hind tarsi not produced from below.



Figs. 9-12: Male genital organ of *N. wutaishanensis* n. sp. – 9) aedeagus, left lateral view; 10) apex of aedeagus, right lateral view; 11) right paramere; 12) left paramere.

Microsculpture on head strongly reduced, on pronotum consists of short transverse meshes, on elytra meshes wider and longer. Male genital organ: figs. 9-12.

Length 11.6 - 11.8 mm. Width 4.5 - 4.6 mm.

Holotype, ♂: China, Wu Tai Shan, 39° N 113° 30' E, 26. VIII. 1929, leg. E. Suenson.

Paratypes: 4 ♂♂, 8 ♀♀ with the same labels; 2 ♀♀ 27. VIII. 1929 and 1 ♂ 30. VIII. 1929, all from the same locality and collector, in the collections of the Zoologisk Museum København, Dostal (Wien), Kirschenhofer (Wien) and Dr. Shilenkov (Irkutsk).

Closely related to *N. subdilatata* MOTSCH. - *N. nivalis* PAYK. group of the subgenus *Boreonebria* JEANNEL. It quite good differs from these species by the form of pronotum, first antennal segment and by the chetotaxy of elytra and antennae.

#### Abstract

Description of two new Nebriini from China: *Nebria (Reductonebria) suensoni* n. sp. and *Nebria wutaishanensis* n. sp. of the Collection Suenson in the 'Zoologisk Museum København'.

#### REFERENCES

SHILENKOV, V. G. (1975): Taxonomic review of genus *Nebria* Latr. (Coleoptera, Carabidae) from Siberia and Far East of the USSR. – Entomol. Obozr., 54(4): 830-845 (in russian).

Author's addresses: Dr. V. G. SHILENKOV  
Department of Invertebrate Zoology, Irkutsk State University  
Suche-Bator street 5  
Irkutsk 664 011, USSR.

A. DOSTAL  
Meynertgasse 8/11  
A - 1090 Wien, Austria.

# ZOBODAT - [www.zobodat.at](http://www.zobodat.at)

Zoologisch-Botanische Datenbank/Zoological-Botanical Database

Digitale Literatur/Digital Literature

Zeitschrift/Journal: [Zeitschrift der Arbeitsgemeinschaft Österreichischer Entomologen](#)

Jahr/Year: 1983

Band/Volume: [35](#)

Autor(en)/Author(s): Shilenkov Viktor G., Dostal Alexander

Artikel/Article: [Eine neue Pterostichus-Art aus Mittelasien \(Coleoptera, Carabidae, Pterostichini\). 43-46](#)